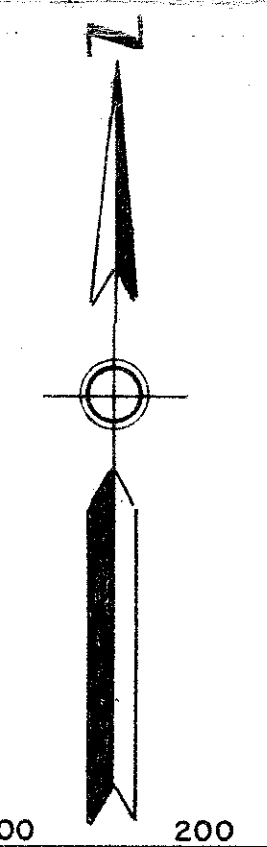


PINEWOOD EAST OF WELLINGTON

P.U.D.
IN PART OF SECTION 34, TWP. 43 S., RGE. 41 E.
PALM BEACH COUNTY, FLORIDA
IN 3 SHEETS SHEET NO. 2

GEE & JENSON
ENGINEERS-ARCHITECTS-PLANNERS, INC.
WEST PALM BEACH, FLORIDA
NOVEMBER 1975

97



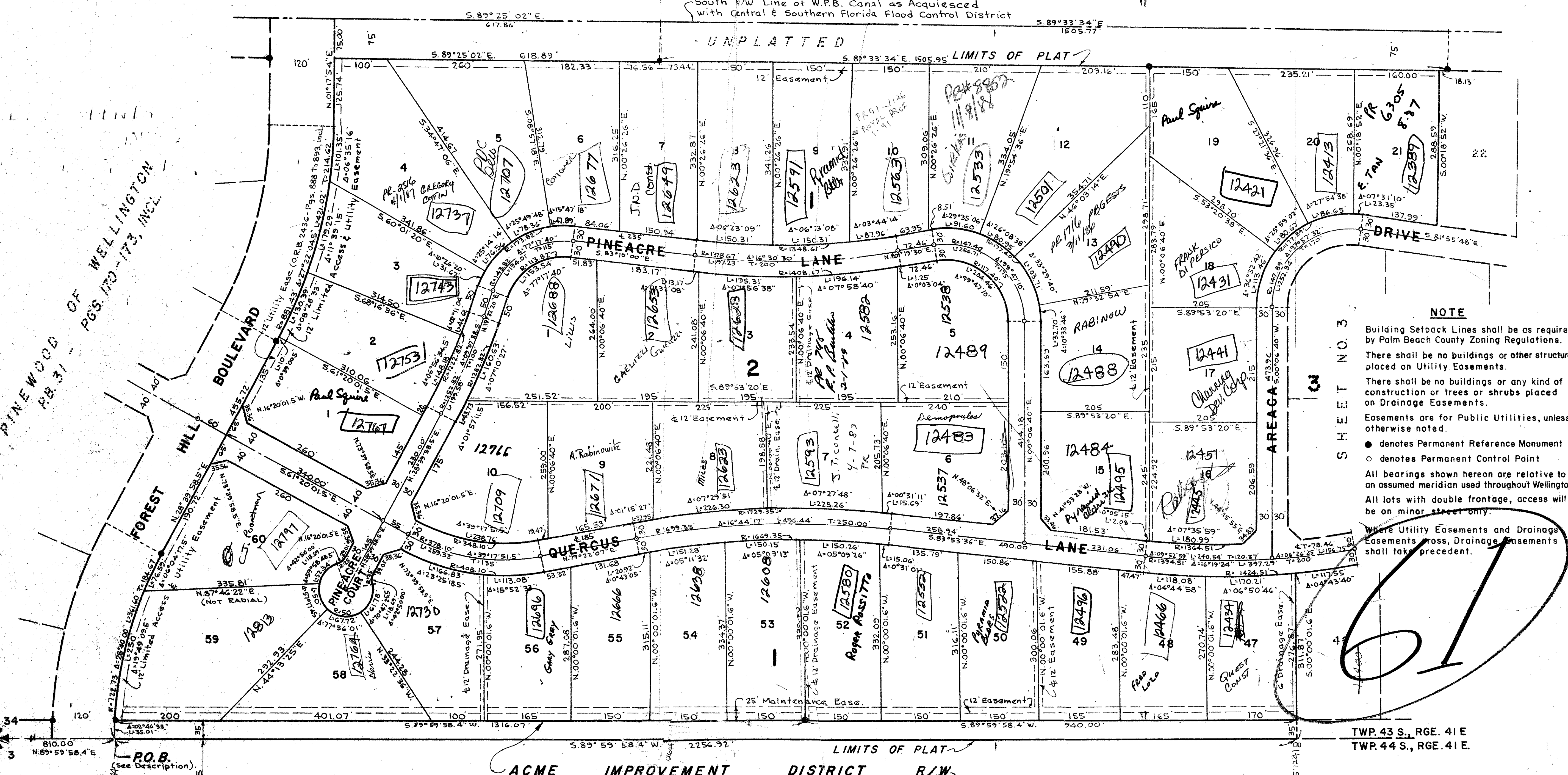
100 50 0 100 200 300 400
SCALE IN FEET SCALE: 1" = 100'

STATE OF FLORIDA
COUNTY OF PALM BEACH
This Plat was filed for record at _____ M.
this _____ day of _____, 197____
and duly recorded in Plat Book No. _____
on page _____
JOHN B. DUNKLE, Clerk Circuit Court
By _____, D.C.

WEST PALM BEACH CANAL

South R/W Line of W.P.B. Canal as Acquired
with Central & Southern Florida Flood Control District

UNPLATTED
LIMITS OF PLAT



NOTE

Building Setback Lines shall be as required by Palm Beach County Zoning Regulations. There shall be no buildings or other structures placed on Utility Easements. There shall be no buildings or any kind of construction or trees or shrubs placed on Drainage Easements. Easements are for Public Utilities, unless otherwise noted.

- denotes Permanent Reference Monument
- denotes Permanent Control Point

All bearings shown hereon are relative to an assumed meridian used throughout Wellington. All lots with double frontage, access will be on minor street only.

Where Utility Easements and Drainage Easements cross, Drainage Easements shall take precedent.

SHEET NO. 3

32/197
1/43/41 0332-375

TWP. 43 S., RGE. 41 E.
TWP. 44 S., RGE. 41 E.

PINEWOOD EAST OF WELLINGTON PUD
32/197
1/43/41 0332-375